



# GLOBAL DIESEL<sup>®</sup>

Fuel Injection Systems



[www.global-diesel.com](http://www.global-diesel.com)

2023

# GLOBAL DIESEL®

## Fuel Injection Systems



We have founded in 1986 as Cimbar Diesel Pump Injector Repair Service. We have decided to start to produce diesel fuel injection system spare parts in addition to repair service after serving many years. In this context, we produced more than 60 type of diesel pump elements by making serious investments in 2004. We have changed our company identity completely in 2015 and got Global Diesel name. We only serve as a spare parts manufacturer of diesel fuel injection systems. Besides that we produce special tools that are unique in the world so that services can repair pumps and injectors easily.

Quality is before anything else for us. If you compromise on quality, you will neither enjoy your work nor your customers will be satisfied. In this context, our understanding of quality brings us customer satisfaction. We follow the latest technology in order not to compromise on quality. And we integrate it into our facilities at full speed.

Thanks to quality in the products we produce, we succeeded to enter almost every diesel services in Turkey. In recent years, we export most of our production. Global Diesel brand is known worldwide from Peru to Australia. Global Diesel brand announces own name every day and expands its reached service group.

[www.global-diesel.com](http://www.global-diesel.com)

**2023**

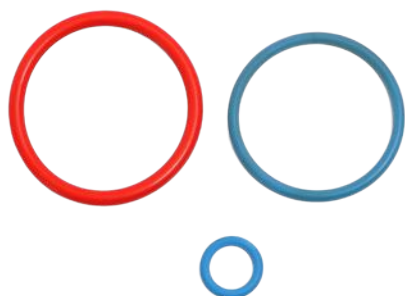
**CATERPILLAR**  
**C13 - C15 - C16 - C18 - C27 - C32 - 3406E**  
**3500B - 3508B - 3512B - 3516B - 3516E**  
**C10 - C12 - 317C - 3196**



**Caterpillar C10 EUI Valve**  
Global Diesel Code: 062 C10



**Caterpillar C15 EUI Valve**  
Global Diesel Code: 062 C15



**Injector O'ring Set** (for 3406E Family)  
Global Diesel Code: 062 06E-0



**Actuator O'ring Set** (for 3406E Family)  
Global Diesel Code: 062 06E-A



**Injector O'ring Set** (for 3516E Family)  
Global Diesel Code: 062 16E-0



**Injector O'ring Set** (for 3516E Family)  
Global Diesel Code: 062 16E-A



**VOLVO**  
**References of Suitable Injectors**  
**BEBE4B12004**

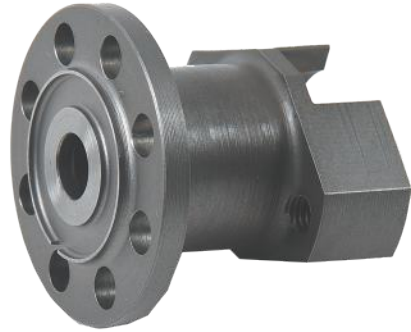
154909 - 3155040 - 8112557



**Volvo EUI Valve**  
Global Diesel Code: 022 486  
7135-486



**Volvo EUI Actuator Spacer**  
Global Diesel Code: 022 486S  
7135-486



**EUI O'ring Set (without Seal Plate)**  
Global Diesel Code: 022 488  
7135-488



**EUI O'ring Set (without Seal Plate)**  
Global Diesel Code: 022 493  
7135-493



**EUI O'ring Set (with Seal Plate)**  
Global Diesel Code: 022 488P  
7135-488



**CP1 Pump Plunger**

Global Diesel Code: 013 101 349

F 01M 101 349

Suitable Pumps for CP1 Pump Plunger	
Pump Numbers	
0 445 010 006	0 445 010 046
0 445 010 007	0 445 010 050
0 445 010 008	0 445 010 071
0 445 010 010	0 445 010 072
0 445 010 011	0 445 010 132
0 445 010 013	0 445 010 138
0 445 010 018	0 445 010 162
0 445 010 019	0 445 010 163
0 445 010 021	0 445 010 178
0 445 010 024	0 445 010 201
0 445 010 027	0 445 010 203
0 445 010 028	0 445 010 253
0 445 010 030	0 445 010 267
0 445 010 038	0 445 020 002



**CP1 Pump Repair Kit**

Global Diesel Code: 013 101 454

F 01M 101 454



**CP1 Pump Repair Kit**

Global Diesel Code: 013 101 456

F 01M 101 456

# Unit Pump/Injector Systems



## EUI/EUP (PDE/PLD) Valve

Global Diesel Code: 012 00B



## EUI (PDE) Valve (Suitable for

Scania, Iveco, Volvo)

Global Diesel Code: 012 00S



## EUP Valve (Suitable for Mack, MTU)

Global Diesel Code: 012 00M



## EUI Valve (Suitable for Detroit S50/S60)

Global Diesel Code: 052 00D



## EUP Plug

Global Diesel Code: 012 MFP

- 9,50 - 9,52 - 9,54 - 9,56 - 9,58 - 9,60



## EUI Plug

Global Diesel Code: 012 SFP

- 14,70 - 14,72 - 14,74 - 14,76 - 14,78 - 14,80



## EUP Plug (Suitable for Mack)

Global Diesel Code: 012 MP

- 9,50 - 9,51 - 9,52 - 9,54 - 9,56 - 9,58 - 9,60



## EUP Roller (Suitable for Axor, Actros)

Global Diesel Code: 012 402

F 00H N37 402



## EUP Roller (Suitable for Atego)

Global Diesel Code: 012 628

F 00H N37 628



012 00B	+0,01	+0,03	+0,06	+0,09	+0,12
Ø6,997	✓	✓			
Ø7,000	✓	✓	✓		
Ø7,005	✓	✓	✓		
Ø7,010	✓	✓	✓	✓	✓
Ø7,015	✓	✓	✓	✓	✓
Ø7,020		✓	✓	✓	✓
Ø7,025		✓	✓	✓	✓
Ø7,030		✓	✓	✓	✓
Ø7,035		✓	✓	✓	✓
Ø7,040		✓	✓	✓	✓
Ø7,045		✓	✓	✓	✓
Ø7,050		✓	✓	✓	✓
Ø7,055			✓		
Ø7,060		✓	✓		
Ø7,065			✓		
Ø7,070		✓	✓		
Ø7,075			✓		
Ø7,080		✓	✓		
Ø7,085			✓		
Ø7,090			✓		



012 00S	+0,01	+0,03	+0,06	012 00M	+0,01	+0,03	+0,06
Ø6,997	✓	✓		Ø6,997		✓	
Ø7,000	✓	✓		Ø7,000	✓	✓	
Ø7,005	✓	✓		Ø7,005	✓	✓	
Ø7,010	✓	✓		Ø7,010	✓	✓	
Ø7,015	✓	✓	✓	Ø7,015		✓	✓
Ø7,020	✓	✓	✓	Ø7,020		✓	✓
Ø7,025	✓	✓	✓	Ø7,025		✓	✓
Ø7,030		✓	✓	Ø7,030		✓	✓
Ø7,035		✓	✓	Ø7,035		✓	✓
Ø7,040		✓	✓	Ø7,040		✓	✓



052 00D	+0,01	+0,03	+0,06
Ø6,980	✓	✓	
Ø6,985	✓	✓	
Ø6,990	✓	✓	
Ø6,995	✓	✓	
Ø7,000	✓	✓	
Ø7,005		✓	✓
Ø7,010		✓	✓
Ø7,015		✓	✓
Ø7,020		✓	✓
Ø7,025		✓	✓



✓: always available in stock

Columns define diameter

Rows define lip thickness

\* Lip thickness is a compensation of abrasion which occurs from angled surface correction.



**EUP Adjustable Plug**

Global Diesel Code: 012 AAP



**MB Actros Injector Fuel  
Inlet Connector**

Global Diesel Code: 012 467  
2 433 370 467



**MB Injector Heat Shield**

Global Diesel Code: 012 003  
F 00Z W00 003



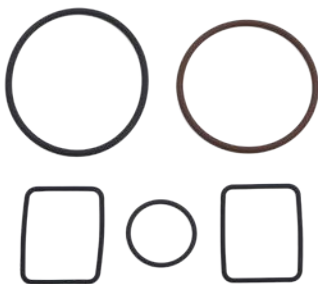
**MB Actros Injector  
Washer**

Global Diesel Code: 012 049  
2 430 105 049



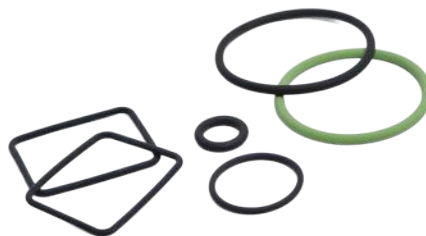
**EUP Coil Fixing Screw**

Global Diesel Code: 012 CFS



**MB Axor-Actros O-ring Set**

Global Diesel Code: 012 069  
F 00H N37 069



**MB Atego O-ring Set**

Global Diesel Code: 012 070  
F 00H N37 070



**DAF O-ring Set**

Global Diesel Code: 012 892  
F 00V X99 892





**EUI Adjustable Plug**

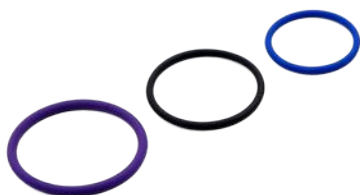
Global Diesel Code: 012 SAP



**Magnetic Plate Screw (for Bosch)**

Global Diesel Code: 012 725

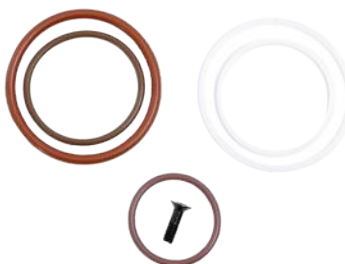
F 00H N35 725



**EUI O'ring Set (for Scania)**

Global Diesel Code: 012 999

F 00V X99 999



**EUI Solenoid O'ring Set**

(for Bosch)

Global Diesel Code: 012 928

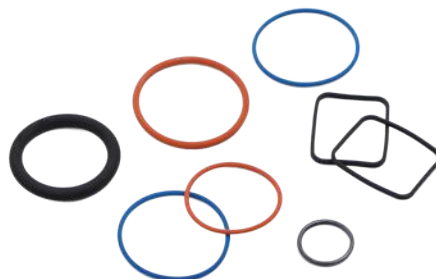
F 00H N37 928



**EUI O'ring Set (for Iveco)**

Global Diesel Code: 012 996

F 00V X99 996



**EUI O'ring Set (for Detroit S50/60)**

Global Diesel Code: 052 001

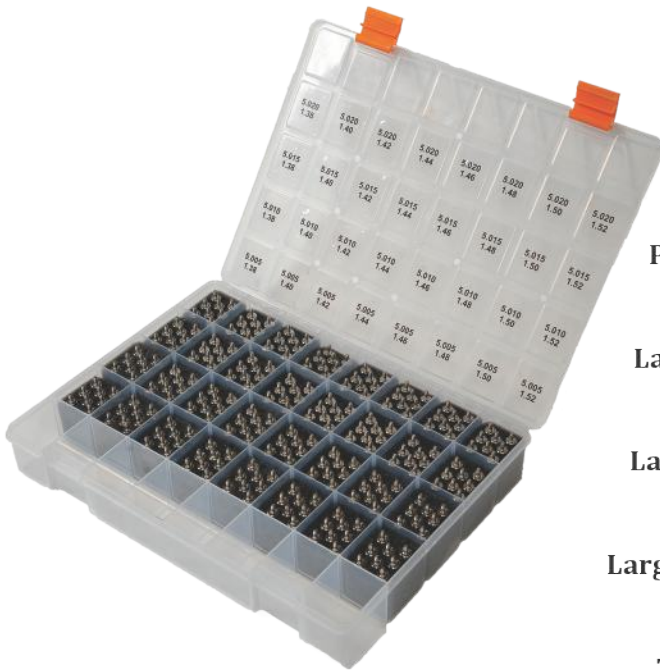
5230001



### Actuator Valve Needle

Global Diesel Code: 072 240

### Actuator Valve Needle Sets



**Economic Set** (2 pieces for each size, 64 pieces total)

Global Diesel Code: 072 240-E

**Standard Set** (4 pieces for each size, 128 pieces total)

Global Diesel Code: 072 240-S

**Professional Set** (8 pieces for each size, 256 pieces total)

Global Diesel Code: 072 240-A

**Large Economic Set** (2 pieces for each size, 64 pieces total)

Global Diesel Code: 072 240-LE

**Large Standard Set** (4 pieces for each size, 128 pieces total)

Global Diesel Code: 072 240-LS

**Large Professional Set** (8 pieces for each size, 256 pieces total)

Global Diesel Code: 072 240-LA

**The Master Set** (8 pieces for each size, 512 pieces total)

Global Diesel Code: 072 240-M

072 240	1,38	1,40	1,42	1,44	1,46	1,48	1,50	1,52
Ø5,005	✓	✓	✓	✓	✓	✓	✓	✓
Ø5,010	✓	✓	✓	✓	✓	✓	✓	✓
Ø5,015	✓	✓	✓	✓	✓	✓	✓	✓
Ø5,020	✓	✓	✓	✓	✓	✓	✓	✓
Ø5,025	✓	✓	✓	✓	✓	✓	✓	✓
Ø5,030	✓	✓	✓	✓	✓	✓	✓	✓
Ø5,035	✓	✓	✓	✓	✓	✓	✓	✓
Ø5,040	✓	✓	✓	✓	✓	✓	✓	✓

**Columns** define diameter  
**Rows** define wall thickness

✓: always available in stock

\* **Large Sets** include bigger diameter than 5,020. **The Master Set** includes all measurements.



**Actuator Valve Nut**  
Global Diesel Code: 072 240N

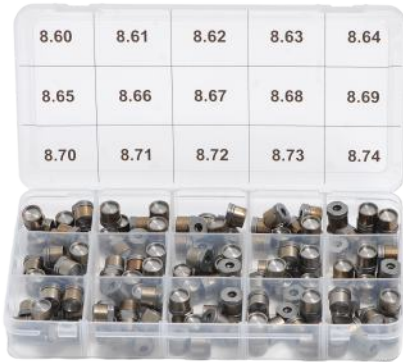


**Actuator Disk**  
Global Diesel Code: 072 240D



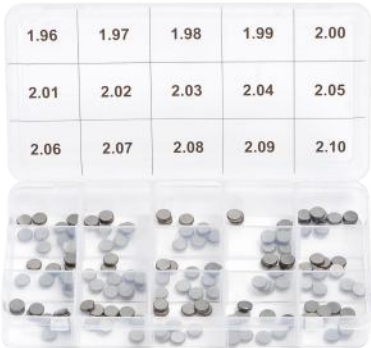
**Actuator Plug**  
Global Diesel Code: 072 240P

072 240N
8,60
8,61
8,62
8,63
8,64
8,65
8,66
8,67
8,68
8,69
8,70
8,71
8,72
8,73
8,74

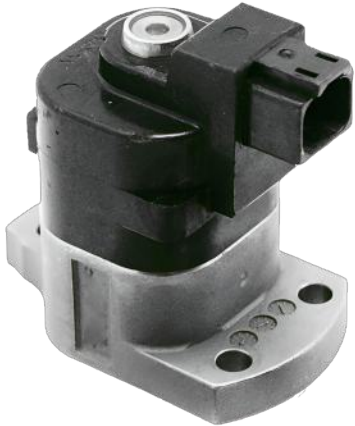


**Actuator Valve Nut Set**  
(10 pcs for each, 150 pcs total)  
Global Diesel Code: 072 240N-S

072 240D
1,96
1,97
1,98
1,99
2,00
2,01
2,02
2,03
2,04
2,05
2,06
2,07
2,08
2,09
2,10



**Actuator Disk Set**  
(10 pcs for each, 150 pcs total)  
Global Diesel Code: 072 240D-S



**Remanufactured Actuator Set**  
(2 Timing - 2 Metering)  
Global Diesel Code: 072 178  
1784239 - 1784240





**Injector Repair Kit**

Global Diesel Code: 072 237  
1441237



**Injector Filter Set**

Global Diesel Code: 072 707  
1434707



**Injector Oil Seal**

Global Diesel Code: 072 063  
5025063



**Actuator Repair Kit**

Global Diesel Code: 072 ARK



**Actuator O'ring Set**

Global Diesel Code: 072 AOS

# Motorized Unit Pump/Injector Repair Kit



We have designed this kit for technically correct repairing of pumps/injectors and to provide the fastest process. Thus, we have presented the best solution to the diesel services. Diesel services save a lot of time due to this kit. There is a video about using of this kit on QR-Code. Using is quite easy and simple as shown in video.



**Hole correction tool** diameter changes by movement of screws on tool. Don't need to hit to change the diameter. In this case, tool surface remains intact and tool life would be more.



There are three types of **angled surface correction** tools which are *coarse* (single circle), *medium* (double circle), *finish* (triple circle). You can choose it according to abrasion. When you use these tools (hole and angled surface correction tools), the angle and hole will have common axis. The shape will be a perfect "Y". Because, the angle doesn't move and grow so that the angle is totally constant, you can understand that this tool life span is longer than traditional lapping tools. Only the diameter is changable.



After correction the angled surface, we grind the valve from the length so as to counteract the approach of the valve coil. We don't make any process to magnetic plate or any other to anywhere for adjusting. Because, If you make any process to anywhere for adjusting to gap between valve and coil, excluding valve length, the pump/injector will be disrupt. Pump/Injector will not work like the old. We just grind to length of valve by using **grinder**.

There are lots of health check tools are designed with **Motorized Repair Kit** for Unit Pump/Injector Systems



# Motorized Unit Pump/Injector Repair Kit



## Motorized EUI/EUP Repair Kit Motorized System

Global Diesel Code: 012 MS

## Motorized System Attachment for EUI

Global Diesel Code: 012 MSA

## Motorized System Attachment for Detroit EUI

Global Diesel Code: 052 MSA



- Single Circle is Coarse
- Double Circle is Medium
- Triple Circle is Finish



## Angled Surface Correction Tool

Global Diesel Codes

- 012 C-ASC (Coarse) [Ø6,995-Ø7,045]
- 012 M-ASC (Medium) [Ø6,995-Ø7,045]
- 012 F-ASC (Finish) [Ø6,995-Ø7,045]
- 012 L-C-ASC (Coarse) [Ø7,045-Ø7,090]
- 012 L-M-ASC (Medium) [Ø7,045-Ø7,090]
- 012 L-F-ASC (Finish) [Ø7,045-Ø7,090]

## Angled Surface Correction Tool for Detroit EUI

Global Diesel Codes

- 052 M-ASC (Medium)
- 052 F-ASC (Finish)

## Hole Correction Tool

Global Diesel Code: 012 HC



## Grinder

Global Diesel Code: 012 G



## Grinder Attachment for EUI

Global Diesel Code: 012 GAI





**EUI Nozzle Control Tool**

Global Diesel Code: 012 SNC



**EUP Element Leakage Control Tool**

Global Diesel Code: 012 ELC



**Plate Side Measuring Tool**

Global Diesel Codes

012 PSM

012 PSM-I (with Dial Indicator)



**EUI Plug Measuring Tool**

Global Diesel Codes

012 SPM

012 SPM-I (with Dial Indicator)



**EUP Plug Measuring Tool**

Global Diesel Codes

012 APM

012 APM-I (with Dial Indicator)



**Nozzle, Valve and Element Control Kit for EUI**

Global Diesel Code: 012 GC



**Nozzle, Valve and Element Control Kit for Detroit EUI**

Global Diesel Code: 052 GC

# Motorized Unit Pump/Injector Repair Kit

Motorized EUI/EUP Repair Kit Contents List

Product Name	Product Code	Economic	Standard	Professional	Detroit Eco	Detroit Std	Detroit Pro	The Master
Motorized System	012 MS	✓	✓	✓	✓	✓	✓	✓
Motorized System Attachment for EUI	012 MSA	✓	✓	✓	✓	✓	✓	✓
Motorized System Attachment for Detroit EUI	052 MSA				✓	✓	✓	✓
Angled Surface Correction Tool (Coarse) [Up to Ø7,045]	012 C-ASC	✓	✓	✓	✓	✓	✓	✓
Angled Surface Correction Tool (Medium) [Up to Ø7,045]	012 M-ASC	✓	✓	✓	✓	✓	✓	✓
Angled Surface Correction Tool (Finish) [Up to Ø7,045]	012 F-ASC	✓	✓	✓	✓	✓	✓	✓
Large Angled Surface Correction Tool (Coarse)	012 L-C-ASC			✓			✓	✓
Large Angled Surface Correction Tool (Medium)	012 L-M-ASC			✓			✓	✓
Large Angled Surface Correction Tool (Finish)	012 L-F-ASC			✓			✓	✓
Angled Surface Correction Tool for Detroit EUI (Medium)	052 M-ASC				✓	✓	✓	✓
Angled Surface Correction Tool for Detroit EUI (Finish)	052 F-ASC				✓	✓	✓	✓
Hole Correction Tool	012 HC	1 Piece	3 Pieces	3 Pieces	1 Piece	3 Pieces	3 Pieces	3 Pieces
Grinder	012 G		✓	✓		✓	✓	✓
Grinder Attachment for EUI	012 GAI		✓	✓		✓	✓	✓
EUP Plug Measuring Tool (with Dial Indicator)	012 APM-I	✓	✓	✓	✓	✓	✓	✓
EUI Plug Measuring Tool (with Dial Indicator)	012 SPM-I	✓	✓	✓	✓	✓	✓	✓
EUI Nozzle Control Tool	012 SNC	✓	✓	✓	✓	✓	✓	✓
EUP Element Leaksage Control Tool	012 ELC	✓	✓	✓	✓	✓	✓	✓
Plate Side Measuring Tool (with Dial Indicator)	012 PSM-I	✓	✓	✓	✓	✓	✓	✓
Nozzle, Valve and Element Control Kit for EUI	012 GC			✓				✓
Nozzle, Valve and Element Control Kit for Detroit EUI	052 GC						✓	✓



## Manual EUI/EUP Repair Kit



**3-E DESIGN**

**ERGONOMIC  
EXPRESSIVE  
ECONOMIC**

**Special Helical Surface  
for High Cutting  
Performance**

### Global Diesel Codes of Manual EUI/EUP Repair Tools

- 012 M-HC : Hole Correction Tool
- 052 M-HC : Hole Correction Tool for Detroit EUI
- 012 M-C-ASC: Angled Surface Correction Tool (Coarse)
- 012 M-F-ASC: Angled Surface Correction Tool (Finish)
- 052 M-C-ASC: Angled Surface Correction Tool for Detroit EUI (Coarse)
- 052 M-F-ASC: Angled Surface Correction Tool for Detroit EUI (Finish)

## Manual EUI/EUP Repair Kit [S Series]



**LONG LIFE SPAN  
PRECISE  
ATTRACTIVE  
ERGONOMIC**

**Special Helical Surface  
for High Cutting Performance**

### Global Diesel Codes of Manual EUI/EUP Repair Tools [S Series]

- 012 M-HC-S : Hole Correction Tool
- 052 M-HC-S : Hole Correction Tool for Detroit EUI
- 012 M-C-ASC-S: Angled Surface Correction Tool (Coarse)
- 012 M-F-ASC-S: Angled Surface Correction Tool (Finish)
- 052 M-C-ASC-S: Angled Surface Correction Tool for Detroit EUI (Coarse)
- 052 M-F-ASC-S: Angled Surface Correction Tool for Detroit EUI (Finish)

**Adjustable by Screws**



# SCANIA (ISX) HPI CUMMINS ACTUATOR REPAIR KIT



**ALL NEEDS IN ONE KIT**  
**ERGONOMIC DESIGN**  
**THE BEST SOLUTION**

**Special Helical Surface**  
FOR HIGH CUTTING PERFORMANCE



**Hole Correction Tool**  
Global Diesel Code: 072 HC



**Coil Side Measuring Tool**  
Global Diesel Code: 072 CSM  
072 CSM-I (with Dial Indicator)



**Plug Assembly Tool**  
Global Diesel Code: 072 PAT



**Triggerring Measuring Tool**  
Global Diesel Code: 072 TMT  
072 TMT-I (with Dial Indicator)



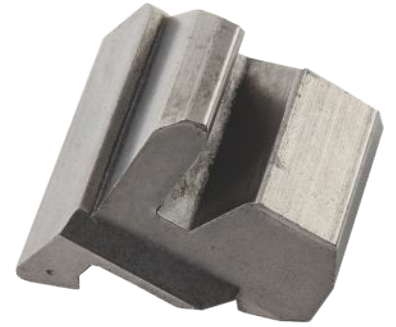
**Needle Assembly Tool**  
Global Diesel Code: 072 NAT



**Ford Cargo Ramp**  
Global Diesel Code: 021 354  
515354



**Ford Cargo Ramp Roller**  
Global Diesel Code: 021 200  
508200



**Ford Cargo Governor Weight**  
Global Diesel Code: 021 250  
513250



**Fuel Pump Throttle Shaft Bush**  
Global Diesel Code: 011 333  
1 460 324 333



**Head Rotor Plug**  
Global Diesel Code: 011 306  
1 463 461 306



**Timer Piston**  
Global Diesel Code: 021 419C  
7177-419C



**Governor Weight**  
Global Diesel Code: 021 914G  
7123-914G



**Governor Weight**  
Global Diesel Code: 021 914E  
7123-914E



[www.global-diesel.com](http://www.global-diesel.com)



[sales@global-diesel.com](mailto:sales@global-diesel.com)



+90 212 481 84 89



Teknik Oto Sanayi Sitesi 1. Blok No: 2  
Cevizlibağ - Topkapı / İSTANBUL

